

ANNUAL REPORT 2020



Lotus
Outreach
Australia



CONTENTS

Contents

President's report	2
An overview of LOA	4
Fundraising Report	6
Lotus Outreach International	9
Cambodia Liaison Report	10
Learning From Home	11
Board and Committee	12
Affiliates	15
Contact Details	16
Financial Report	17



LETTER FROM OUR PRESIDENT

To use the cliché of 2020, this year has been unprecedented in every way for us, for Cambodian school children, Lotus Outreach Australia GATE programs, LOA fund raising and individual LOA committee members.

When extreme challenges arrive, like a worldwide pandemic, it is always the poor and marginalised that are disproportionately affected the worst.



Oxfam's Inequality Report named 2020 "a terrible year that hit the poorest, the hardest across the planet". The World Bank states that coronavirus pandemic could set global poverty reduction back as much as a full decade. It has exposed how work, health and education systems create additional disadvantages for low-income families. School closings affected some 1.7 billion children globally including 3.2 million in Cambodia for most of the year. Unesco points out that millions of girls pulled out of school in 2020, tragically, will never return.

Our local partners in Cambodia, LOCAM and CWCC, worked hard to mitigate this outcome by staying in touch with and supporting the scholarship girls. LOA supplied smartphones to GATE students to allow access to online learning. Three quarters of poor households (identified by IDPoor*) in Cambodia have experienced income loss from COVID-19. Many households have already applied negative coping strategies, such as taking loans and selling assets. Such huge stress puts a strain on the family and affects well-being and mental health.

Jane Lyttleton

PRESIDENT



The funding of NGOs working for poor communities like those that Lotus Outreach supports has never been so needed. By all accounts our in-country partner NGO, CWCC has done an excellent job in supporting GATE girls and their families during the Covid 19 crisis.

LOA continued to fund the GATE program in the absence of school classes, to reduce as much as possible, any further fall out from this crisis.

Year 9 and 12 students were able to return to school late in the year, to prepare to sit National Exams. However the Cambodian Dept of Education decided to grant automatic passes to all Year 9 and 12 students and they were not required to sit the exams. We expect that all classes will return to regular school schedules in January 2021.

“Pivot”, like “unprecedented” is another catch phrase of the pandemic – and pivot is what LOA has done to address necessary changes in our projects in response to changing times and needs. Cities grow and spread and rural villages and schools are impacted. Hence from January 2021 LOA will begin recruitment of girls from poor and vulnerable communities in more and different areas around Phnom Penh, viz the districts of Dangkor and Sen Sok and offering scholarships to girls in senior years in schools in these areas. Graduates will then be encouraged to undertake vocational skill training.

Even though this year has necessarily been a subdued one in terms of LOA committee and fund-raising activity, the organisation is still able to actively aid vulnerable girls from poor, homeless or violent backgrounds or those who have lost their parents, in getting an education (albeit interrupted this year) and being empowered to prevent exposure to trafficking, slave labour or violence. We are indeed grateful to have this opportunity to benefit some of those who need it most.

*Refs

<https://assets.oxfamamerica.org/media/documents/The-Inequality-Virus-English.pdf>

<https://www.worldbank.org/en/publication/poverty-and-shared-prosperity>

<https://en.unesco.org/news/covid-19-school-closures-around-world-will-hit-girls-hardest>

https://reliefweb.int/sites/reliefweb.int/files/resources/KHM_Socioeconomic_Response-Plan_2020.pdf



AN OVERVIEW OF LOA

Lotus Outreach Australia is a Not-For-Profit organisation. Our mission is to ensure the education, health, and safety of the most marginalised and exploited women and children in Cambodia. Guided by the UN's Millennium Development Goals regarding extreme poverty, universal education, gender equality and empowerment of women, we advocate for the human rights of these women and children by providing educational access and opportunities.



What We Do

We work from the basis that prevention is better than cure. In partnership with respected Cambodian Government registered NGOs, we identify girls at risk of the worst forms of child labour and trafficking. Our intervention provides educational opportunities through our Girls' Access to Education (GATE) scholarships program.

Our Projects

GATE is a highly successful program, seeing girls from the very poorest families access and succeed at high school before going onto vocational training or to university, or finding meaningful employment. Our projects focus on sustainable change for families and communities through the education of their girls.

By supporting families in dire poverty to become self-sufficient, we create the possibility of an alternative future for these girls and change the potential opportunities for whole communities and future generations.



Our programs provide:

- Scholarships, uniforms, school supplies, bikes to transport to school as well as healthcare for around 100 at-risk girls
- Nutritional support for families in dire poverty. This has been shown to lessen the pressure on families to put their girls into child labour in order to feed their families - which tragically often leads on to sex trafficking.
- Advocacy, in association with the Cambodian Women's Crisis Centre (CWCC), to inform the community of the dangers and brutality of trafficking, the importance of human and child rights, and the immense value of girls' education to their families in terms of gaining employment and future economic opportunities

We are:

- A registered charity with Australian Charities and Not for Profits Commission (ACNC).
- Incorporated as a Registered Charity with NSW Department of Fair Trading 2004.
- A fundraising authority with NSW Office of Liquor, Gaming and Racing.
- An affiliate of eight Lotus Outreach organisations globally, originally founded by renowned teacher and film-maker Khyentse Norbu Rinpoche. Lotus Outreach Australia programs are managed under our own direction and funding,
- A successful, effective organisation with strong governance and proven programs.

We have:

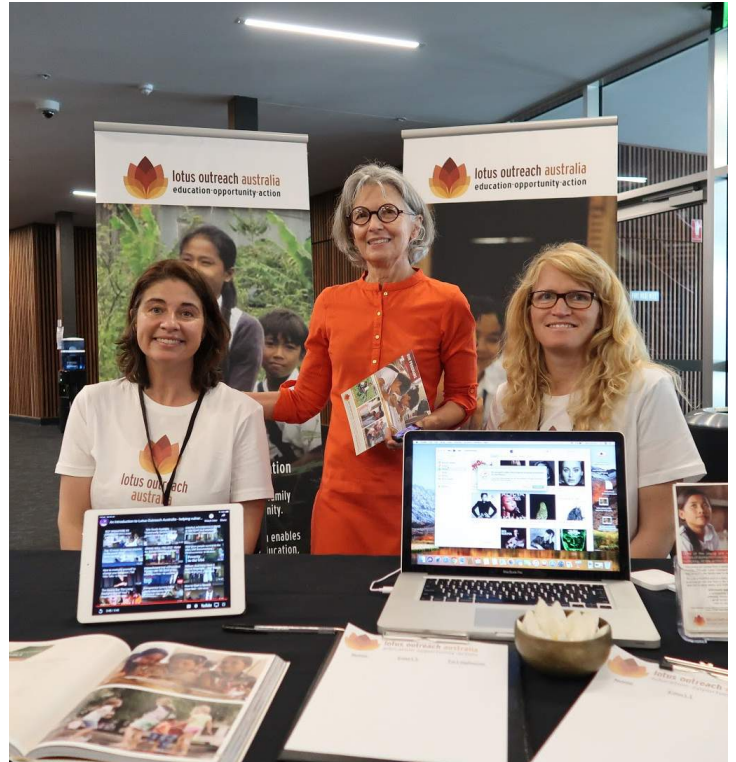
- An ABN, plus charity tax concessions with the Australian Tax Office.
- Tax deductibility through our OAGD status recognised by the Department of Foreign Affairs and the Australian Tax office.



FUNDRAISING REPORT

January - LOA Stand at Dzongsar Khyentse Rinpoche's teachings at UNSW

Accompanying the teachings given by Rinpoche at the UNSW Roundhouse was a stand showcasing the work being done by Lotus Outreach Australia. This was an important opportunity to raise awareness of the need for sponsorship of girls vulnerable to trafficking, and has helped to build our regular donor base, keeping our programs running during a difficult year.



LOA President Jane Lyttleton introducing director Khyentse Norbu

February - Looking for a Lady with Fangs and a Moustache

LOA teamed up with the Khyentse Foundation to screen Khyentse Norbu's newest film, "Looking for a Lady with Fangs and a Moustache". Khyentse Norbu Rinpoche attended the screening and held a Q&A after the screening. Thanks to Dendy Cinema at Circula Quay for supporting this event.



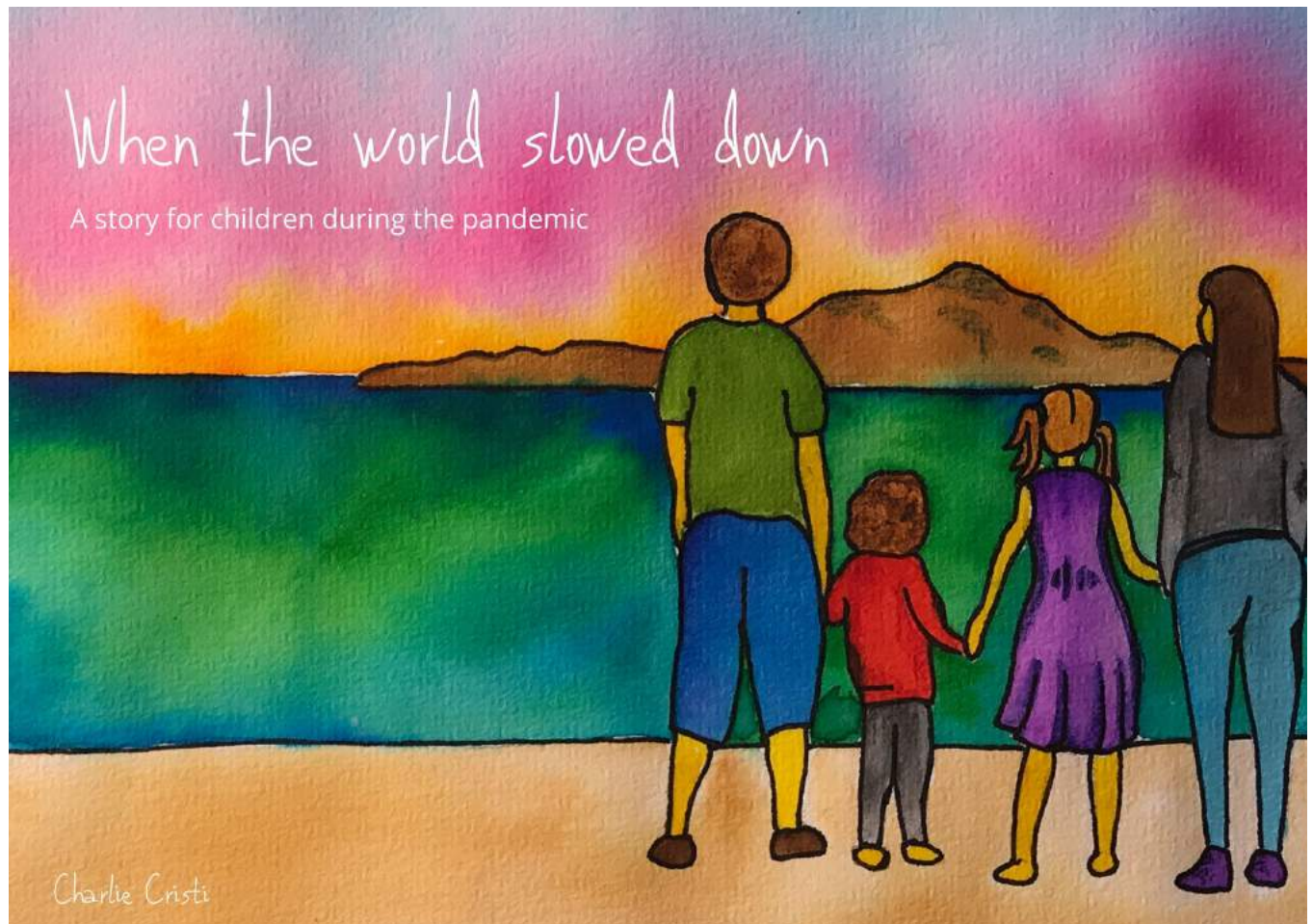
March - HER Music Equality launch

In recognition of International Women's Day, HER launched a 13 hour rave celebrating the talents and skills of women in Melbourne's electronic music industry. They generously donated \$5 from every ticket sold towards the GATE Program.



April - When the World Slowed Down

LOA board member Charlie Cristi wrote and illustrated a short children's story to help families talk about the lockdowns with their children. She has made the book freely available, but asked that people consider a donation to Lotus Outreach Australia. The book has been translated into a number of languages and shared around the world. <https://worldsloweddown.weebly.com/>



June - End of financial year drive

Despite missing out on our annual City2Surf excitement, our supporters didn't let us down for a minute. The generosity and commitment of our team of donors during our End of Financial Year drive has ensured that the work of Lotus Outreach Australia will continue throughout and beyond this hiccup of a year. Thank you all, we are speechless!

Thank you!

October - Launch of our new gift card range

After many years, we have finally redesigned our gift card range. Our cards are designed to celebrate our connection between Australia and Cambodia, bringing together our stunning Australian flora and the magnificent lotus of Cambodia.

The big change is that they are no longer just Christmas cards, and as such will be available on our website all year round.

Artworks by Charlie Cristi.



LOTUS OUTREACH INTERNATIONAL

International Liaisons

In January this year, the board members of Lotus Outreach Australia met with members of our affiliates from the United States of America, the United Kingdom and Hong Kong.

This incredibly productive meeting covered discussions about the broader aims and goals of the Lotus Outreach organisations, and how we can better collaborate to support each other in fundraising and monitoring.

It was very inspiring to meet so many women working towards the same goals and we look forward to what the future holds.



(From left) Genevieve Walsh LOI, Patty Walsh LOI, Penelope Tree LOUK, Sarah Wilkinson LOI (HK), Amanda Cooke LOA, Anna Harper LOA, Charlie Cristi LOA, and Jane Lyttleton LOA.



CAMBODIA LIAISON REPORT

A year of absence and new connections

When I started the role as Cambodia Liaison Officer, I was living in Phnom Penh, able to regularly visit our girls and our implementing partners.

Monitoring and liaising became a little more challenging when I left Cambodia five years ago, however I managed to return at least once a year to conduct on-the-ground monitoring. This year has been like no other though.

While I have been separated from family and friends, I have felt nothing harder than not being able to return to Cambodia, especially during a year when our programs there have meant more than ever to our girls.

Luckily we have an incredible team of people in Cambodia, both through CWCC and LOCAM, who are doing all they can to ensure our girls stay safe and in education. This has been a year of connecting in new ways for everyone, and it has been no different for us at LOA. I have had a number of online conversations with our partners in Cambodia this year, and I am sure now that this has actually set us up for more connection and collaboration in years to come (although nothing can replace being on the ground!)

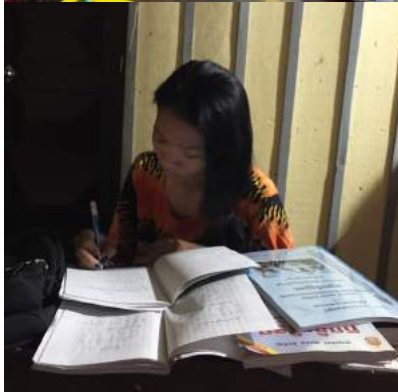


Charlie Cristi

CAMBODIA LIAISON OFFICER



LEARNING FROM HOME



Keeping in touch

In response to the pandemic Cambodia closed the schools for much of the year. LOA provided phones and stipends for data to our girls who otherwise would not have access to their online learning this year. This has also allowed remote monitoring, helping to keep girls safe and in education.

Working together

Some of our girls felt lucky this year to be living in close quarters with their friends. Above are neighbours, Thyda and Meta, who were able to encourage each other to keep studying during the months of lockdown in Cambodia.

Taking exams

In the face of the challenges posed this year, the Cambodian Govt decided to grant passes to all students due to take National exams (Year 9 and 12).



BOARD AND COMMITTEE



President - Jane Lyttleton

Jane is an author, teacher and practitioner of Traditional Chinese Medicine (TCM). Jane has long been dedicated to the education and health of women and children. She helped establish Lotus Outreach Australia in 2004 after she and a group of Lotus Outreach members traveled to Thailand and Cambodia meeting local groups working to combat sex trafficking.



Vice President - Anna Harper

Anna leads her consulting firm, Cultural Shapeshifters, working with Australian and International Businesses and Organisations, and with the UN. She specialises in developing global leaders for the future. She is committed to helping at-risk Cambodian girls gain safe, fulfilled and independent lives. Anna was Treasurer for LOA from 2004-2012, and sits on the board of LOI.



Treasurer - Shona Barker

Shona works in the field of Traditional Chinese Medicine and has experience managing a large multi-disciplinary Holistic Medical Centre. Having witnessed firsthand the devastating effect the lack of education has had on Asian girls being trafficked to Australia, Shona is a strong believer in education as the key to a better life for vulnerable young women.





Secretary - Madeleine Lawler

Madeleine currently manages headspace in Coffs Harbour. She has a passion for young people, education, mental health and effective public service delivery. She wrote her PhD on social enterprise organisations working with disengaged young people. With a background in management consulting and project management, she has a diverse and flexible skill set to bring to LOA.



Cambodia Liaison Officer - Charlie Cristi

Charlie is an education specialist who has worked Cambodia and Bhutan and is now based in New Zealand. She has volunteered with LOA since 2008 and conducts monitoring and liaison visits to Cambodia, meeting our scholarship students and program implementing teams regularly. Charlie also manages social media and supports donor management and fundraising. Charlie also sits on the board of LOCAM.



Fundraising support - Amanda Cook

Amanda is a student of Dzongkhar Kyentse Rinpoche, and a primary school teacher. As such, she has a strong passion for ensuring that all children have equal access to education. Amanda has been active in many of our recent public events.





LOCAM Representative - Raksmei Var

Raksmei has a Bachelor of Business Administration and Masters in Gender Development Studies. She has been working with LOA through LOCAM since our programs started. Raksmei's particular areas of focus include children's education, child and youth mobility and employment, livelihood development, child labor, human trafficking and sexual exploitation.



LOCAM officer - Pisey Chea

Pisey was selected into the Girls' Access To Education (GATE) program when she was in 9th grade and has been supported by Lotus Outreach until the completion of her education. In 2016 Pisey started working part-time with CWCC, working with youth, villagers, and local authorities. Pisey joined the LOCAM office in March 2017, working with the GATE and CATALYST programs.

Changes to the LOA board

At the 2020 Annual General Meeting, a number of new board members were voted onto the board. In 2021 we will welcome the following people to our board:

- Hanna Hegan Ngatai - Vice President
- Heidi Wu - Treasurer
- Aniko Papp - Fundraising Coordinator and Governance Officer

We also say farewell and a massive thank you to Shona Barker, who has been treasurer since 2013, and has been a supporter of LOA since its inception.



LOA'S AFFILIATES



Lotus Outreach International (LOI)

LOA is proud to be an affiliate of LOI, based in California, USA. Lotus Outreach was originally founded by renowned lama and film-maker Norbu Khyentse. He noted a need to give a voice to abused and exploited children in Asia. Today this highly regarded organisation has 8 affiliates worldwide - Australia, USA, Canada, UK, France, Germany, Hong Kong and Taiwan.



Lotus Outreach Cambodia (LOCAM)

LOCAM is registered with the Royal Cambodian Government's Ministry of Interior. LOCAM supports LOA's work by acting as an intermediary between Australia and our implementing partner, CWCC, ensuring immediate monitoring and action year round. LOCAM provides regular reporting and feedback to help LOA maintain effective and appropriate programs.



ជួយស្ត្រីដើម្បីរក្សាជួយខ្លួនឯង
Helping Women Help Themselves

Cambodian Women's Crisis Centre (CWCC)

CWCC is a local NGO registered with the Royal Cambodian Government's Ministry of Interior. Its primary purpose is to provide assistance to women and children who are victims of domestic violence, sexual abuse and trafficking, working towards creating equality, peace and development. CWCC works hand in hand with LOI, LOCAM and LOA on program needs and implementation, ensuring all projects are effective and culturally atuned.



CONTACT DETAILS

Lotus Outreach Australia

Australian Business Number: 133 588 760 11

PO Box 3379

Tamarama

NSW 2026

Australia

ON THE WEB:

www.lotusoutreachaustralia.org.au

BY EMAIL:

info@lotusoutreachaustralia.org.au

DONATIONS:

treasurer@lotusoutreachaustralia.org.au

Facebook: www.facebook.com/LotusOutreachAustralia

Instagram: www.instagram.com/lotusoutreachaustralia/



FINANCIAL REPORT



lotus outreach australia
education-opportunity-action

Lotus Outreach Australia Incorporated
ABN 13 358 876 011
Annual Financial Report
30 June 2020



Lotus Outreach Australia Incorporated
ABN 13 358 876 011

Contents

Statement of comprehensive income	1
Statement of changes in funds	2
Statement of financial position	3
Statement of cash flows	4
Notes to the financial statements	5
Associations' committee members' declaration	8

Lotus Outreach Australia Incorporated
ABN 13 358 876 011

Statement of comprehensive income
For the year ended 30 June 2020

	2020	2019
	\$	\$
Donations and fundraising income	140,110	96,676
Interest income	80	621
Total revenues	<u>140,190</u>	<u>97,297</u>
Fundraising costs	(7,664)	-
Consultants expenses	(921)	(1,101)
Bank charges	(1,289)	(1,651)
Insurance	(2,692)	(2,563)
Other expenses	(169)	(357)
Total expenses	<u>(12,736)</u>	<u>(5,672)</u>
Net surplus before payments to beneficiaries	127,454	91,625
Funds provided to beneficiaries	(35,488)	(98,063)
Net surplus / (deficiency) for the year	<u>91,966</u>	<u>(6,438)</u>

The Statement of Comprehensive Income is to be read in conjunction with the notes to the financial statements set out on page 5 to 7.

Lotus Outreach Australia Incorporated
ABN 13 358 876 011

Statement of changes in funds
For the year ended 30 June 2020

	Accumulated funds \$	Total funds \$
Opening balance 1 July 2018	256,784	256,784
Net deficiency for the year	<u>(6,438)</u>	<u>(6,438)</u>
Closing balance 30 June 2019	<u>250,346</u>	<u>250,346</u>
Opening balance 1 July 2019	250,346	250,346
Net deficiency for the year	<u>91,966</u>	<u>91,644</u>
Closing balance 30 June 2020	<u>342,312</u>	<u>341,990</u>

The Statement of Changes in Funds is to be read in conjunction with the notes to the financial statements set out on page 5 to 7.

Lotus Outreach Australia Incorporated
ABN 13 358 876 011

Statement of financial position
As at 30 June 2020

	Note	2020 \$	2019 \$
Assets			
Cash and cash equivalents	3(a)	100,109	250,346
Total current assets		<u>100,109</u>	<u>250,346</u>
Total non-current assets		<u>242,203</u>	<u>-</u>
Total assets		<u>342,312</u>	<u>250,346</u>
Liabilities			
Total current liabilities		<u>-</u>	<u>-</u>
Total non-current liabilities		<u>-</u>	<u>-</u>
Total liabilities		<u>-</u>	<u>-</u>
Net assets		<u>342,312</u>	<u>250,346</u>
Funds			
Accumulated funds		<u>342,312</u>	<u>250,346</u>
Total funds		<u>342,312</u>	<u>250,346</u>

The Statement of Financial Position is to be read in conjunction with the notes to the financial statements set out on page 5 to 7.

Lotus Outreach Australia Incorporated
ABN 13 358 876 011

Statement of cash flows
For the year ended 30 June 2020

	Note	2020 \$	2019 \$
Cash flows from operating activities			
Cash receipts from donations and fundraising		140,110	96,676
Cash payments to beneficiaries		(35,488)	(98,063)
Cash payments to suppliers		(12,736)	(5,672)
Interest received		80	621
Net cash from operating activities	3(b)	<u>91,96</u>	<u>(6,438)</u>
Cash flows from investing activities			
Transfer to term deposits		<u>102,655</u>	<u>-</u>
Net cash from investing activities		<u>102,655</u>	<u>-</u>
Cash flows from financing activities			
Net cash from financing activities		<u>-</u>	<u>-</u>
Net increase in cash and cash equivalents		91,966	(6,438)
Cash and cash equivalents at beginning of the year	3(a)	<u>250,346</u>	<u>256,784</u>
Cash and cash equivalents at the end of the year	3(a)	<u>342,312</u>	<u>250,346</u>

The Statement of Cash Flows is to be read in conjunction with the notes to the financial statements set out on page 5 to 7.

Notes to the financial statements
For the year ended 30 June 2020

1. Basis of preparation

a) Non-reporting entity

Lotus Outreach Australia Incorporated (the “Association”) is an association incorporated in New South Wales, Australia, under the *Associations Incorporation Act 2009* and undertakes fundraising activities in New South Wales, Australia, under a licence issued by the New South Wales Department of Fair Trading under the *Charitable Fundraising (NSW) Act 1991*.

The principal activities of the Association are conducting fundraising campaigns, marketing and promotional activities and undertaking all manner of charitable work in order to raise funds for the purpose of supporting the education, health and safety of vulnerable women and children in Cambodia. The Association is a member of the Lotus Outreach International network and partners with the Cambodian Women’s Crisis Centre (“CWCC”) and Cambodian Organization for Children and Development (“COCD”) for local implementation of programs.

In the opinion of the Associations’ Committee Members, the Association is not publicly accountable nor a reporting entity. The financial report of the Association has been drawn up as a special purpose financial report for the use by the Committee and to fulfil the Association’s financial reporting obligations under the Constitution.

b) Basis of accounting

The special purpose financial report has been prepared in accordance with the requirements of the recognition and measurement aspects of all applicable Australian Accounting Standards (“AASBs”) adopted by the Australian Accounting Standards Board (“AASB”) and other authoritative pronouncements of the AASB.

The financial report does not include the disclosure requirements of the following pronouncements having a material effect:

AASB 101	Presentation of Financial Statements
AASB 1048	Interpretation and Application of Standards
AASB 1054	Australian Additional Disclosures

c) Basis of measurement

The financial report is prepared on the historical cost basis.

d) Functional and presentation currency

The financial report is presented in Australian dollars which is also the Association’s functional currency.

e) Use of estimates and judgements

The preparation of financial statements requires management to make judgements, estimates and assumptions that affect the application of policies and the reported amounts of assets, liabilities, income and expenses. Actual results may differ from these estimates.

Estimates and underlying assumptions are reviewed on an ongoing basis. Revisions to accounting estimates are recognised in the period in which the estimate is revised and in any future periods affected.

There are no judgements made by management in the application of AASB’s that have significant effect on the financial report or estimates with a significant risk of material adjustment in the next year.

Notes to the financial statements
For the year ended 30 June 2020

2. Significant accounting policies

a) Financial instruments

A financial instrument is recognised if the entity becomes a party to the contractual provisions of the instrument. Financial assets are derecognised if the Association's contractual rights to the cash flows from the financial assets expire or if the Association transfers the financial asset to another party without retaining control or substantially all risks and rewards of the asset. Financial liabilities are derecognised if the Association's obligations specified in the contract expire or are discharged or cancelled.

Non-derivative financial instruments comprise investments in equity, trade and other receivables, cash and cash equivalents, loans and borrowings, and trade and other payables. Non-derivative financial instruments are recognised initially at fair value. Subsequent to initial recognition, non-derivative financial instruments are measured as described below.

Other non-derivative financial instruments are measured at amortised cost using the effective interest method, less any impairment losses.

b) Finance income and expenses

Finance income comprises interest income on bank accounts. Interest income is recognised as it accrues in profit or loss, using the effective interest method.

Finance expenses comprise interest expense on borrowings. All borrowing costs are recognised in profit or loss using the effective interest method.

c) Revenue recognition

Revenue is recognised to the extent that it is probable that the economic benefits will flow to the entity and the revenue can be reliably measured. Control of a right to receive the donation is attained, usually evidenced by receipt of cash.

d) Income tax

The Association has been registered under the provisions of the *Charitable Fundraising (NSW) Act 1991* and under Subdivision 50-B of the *Income Tax Assessment Act 1997*, it is an income tax exempt charitable entity.

Lotus Outreach Australia Incorporated
ABN 13 358 876 011

Notes to the financial statements
For the year ended 30 June 2020

	2020	2019
	\$	\$
3. Notes to the statement of cash flows		
(a) Cash and cash equivalents		
St George Bank Relief Fund 1	114,728	1,386
St George Bank Relief Fund 2	127,476	46,196
Bank of South Australia Term Deposit	100,109	202,764
	<u>342,312</u>	<u>250,346</u>
(b) Reconciliation of cash flows from operating activities		
Surplus / (deficiency) for the year	91,966	(6,438)
Change in assets and liabilities	-	-
Net cash from operating activities	<u>91,966</u>	<u>(6,438)</u>

4. Commitments and contingencies

The Association does not have any commitments or contingent liabilities not otherwise disclosed in this report.

5. Subsequent events

There has not arisen in the interval between the end of the financial year and the date of this report any item, transaction or event of a material and unusual nature likely, in the opinion of the Associations' Committee Members, to affect significantly the operations of the Association, the results of those operations, or the state of affairs of the Association, in future financial years.

Lotus Outreach Australia Incorporated
ABN 13 358 876 011

Association's committee members' declaration

In the opinion of the Association's Committee Members of Lotus Outreach Australia Incorporated (the "Association"):

- (a) the Association is not publicly accountable nor a reporting entity;
- (b) the financial statements and notes, set out on pages 1 to 7, are drawn up, in accordance with the basis of preparation and significant accounting policies described in Notes 1 and 2, so as to present fairly the financial position of the Association as at 30 June 2019 and its performance, as represented by the results of its operations and its cash flows, for the financial year ended on that date; and
- (c) there are reasonable grounds to believe that the Association will be able to pay its debts as and when they become due and payable.

Signed in accordance with a resolution of the Associations' Committee Members:

President

,